



# HOLLER ||||| HOME ESSENTIAL

Stylish gates and fences for a secure home

Version 2025 (ed. 3)



## Welcome to Home Essential: elegance and security for your home

Home Essential offers a wide range of gates and fences, all crafted to the highest quality standards, ensuring you find the perfect match for your home's architecture.

Whether you're looking for a modern, minimalist solution or a more classic style, Home Essential is here to meet your needs. Thanks to innovative technologies and durable materials, we guarantee products that can withstand both daily wear and tear and changing weather conditions.

Let Home Essential inspire you and discover how easy it can be to make your home both safe and stylish. We invite you to browse through our catalogue and discover the variety and quality of our products.

### Brief Overview

- Motorised or not, Holler Home Essential has the perfect swing or sliding gate, along with a matching aluminium fence
- Individual customisation
- High-quality coating - no more painting required
- Choose from 7 standard colours, with a wide range of special colours also available
- Sustainable and environmentally friendly aluminium
- Plug & Play pre-assembly of all gate systems - making installation very easy
- Internal drive for maximum operational safety and accident prevention





# Model Lyon

*Vertical bars within the frame*

Our Lyon model captivates with its modern and distinctive design. The varying distances between bars create a sense of visual dynamism, adding lightness and transparency to architectural spaces. This style is particularly suited to urban and contemporary designs that emphasize clean lines and minimalism. The Lyon model seamlessly integrates into outdoor environments, offering a stylish yet practical solution for property delineation and privacy. It perfectly balances visual appeal and functional design, enhancing any space it occupies.

## Design within the frame



**ST32**

Bar spacing approx. 80-100 mm



**ST32 fine**

Bar spacing approx. 30-40 mm



**ST65**

Bar spacing approx. 30-60 mm



**ST110**

Bar spacing approx. 30-80 mm



## Characteristics

- Made of aluminium
- Various bar widths: 32, 65 and 110 mm
- Built into the frame
- Weather-resistant and low-maintenance
- Classic contemporary design
- Architectural solution

## Comprehensive solution



### Pedestrian gate

- Width: up to 1,500 mm
- Height: up to 2,000 mm (with 100 mm ground clearance)
- Built-in lock with 3 keys and elegant handleset
- Optionally with electric gate opener



### Manual and power-operated swing gate

- Single-leaf gates up to 3,000 mm wide and 2,000 mm high (with 100 mm ground clearance)
- Double-leaf gates up to 5,000 mm wide and 2,000 mm high (with 100 mm ground clearance)
- Inwards and outwards opening direction possible
- Invisible drive unit in the drive post



### Manual and power-operated sliding gate

- Width: up to 6,000 mm
- Height: up to 2,000 mm (with 100 mm ground clearance)
- Floor-guided or cantilever version
- Electric Plug & Play version



### Fence

- Width: up to 2,000
- Height: up to 2,000 mm (with 100 mm ground clearance)



# Model Basel

*Horizontal slats outside the frame*



The Basel model boasts an innovative design featuring horizontal slats of varying widths. Positioned outside the gate frame, these slats create a bold, modern aesthetic that adds an elegant visual effect while enhancing the minimalist character of the architecture. Perfectly suited for contemporary building projects, the Basel model aligns with designs that prioritize clean lines and exceptional style. It seamlessly blends aesthetic sophistication with practical functionality, offering a stylish solution for property demarcation and enhanced privacy.

## Design outside the frame (continuous)



**QL32A**

Bar spacing approx. 30-40 mm



**QL65A**

Bar spacing approx. 30-60 mm



**QL110A**

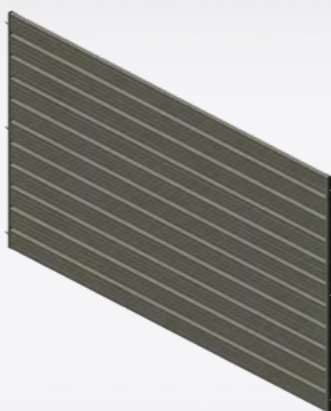
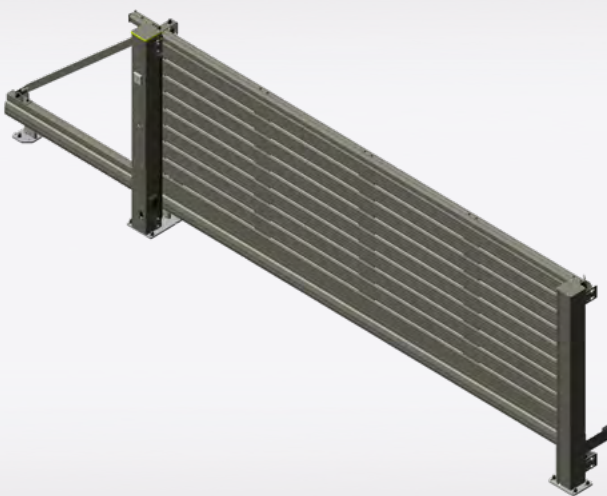
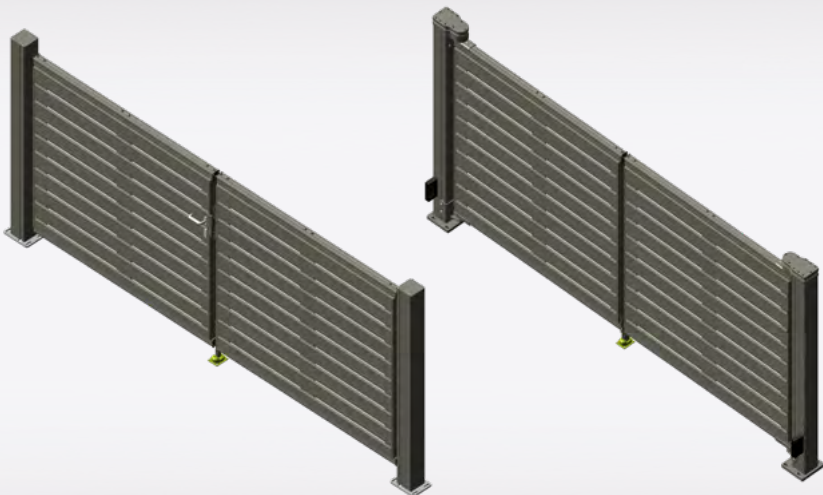
Bar spacing approx. 30-80 mm



## Characteristics

- Made of aluminium
- Various slat widths: 32, 65 and 110 mm
- Horizontal slat profiles built outside the frame
- Weather-resistant and low-maintenance
- Suits every architectural style
- Architectural solution

## Comprehensive solution



### Pedestrian gate

- Width: up to 1,500 mm
- Height: up to 2,000 mm (with 100 mm ground clearance)
- Built-in lock with 3 keys and elegant handleset
- Optionally with electric gate opener

### Manual and power-operated swing gate

- Single-leaf gates up to 3,000 mm wide and 2,000 mm high (with 100 mm ground clearance)
- Double-leaf gates up to 5,000 mm wide and 2,000 mm high (with 100 mm ground clearance)
- Inwards and outwards opening direction possible
- Invisible drive unit in the drive post

### Manual and power-operated sliding gate

- Width: up to 6,000 mm
- Height: up to 2,000 mm (with 100 mm ground clearance)
- Floor-guided or cantilever version
- Electric Plug & Play version

### Fence

- Width: up to 2,000
  - Height: up to 2,000 mm (with 100 mm ground clearance)
- Due to the method of construction, there are different horizontal profiles between gates and fence



# Model Zurich

*Horizontal slats within the frame*

The Zurich model shares similarities with the Basel model but features horizontal slats integrated within the frame. This design choice lends the model a sleek, modern appearance while ensuring structural stability. The varying widths of the slats introduce a dynamic visual effect that seamlessly complements contemporary architecture. With its combination of minimalist design and practical functionality, the Zurich model is perfect for creating a stylish and effective property boundary.

## Design within the frame



**QL32i**

Bar spacing approx. 30-40 mm



**QL65i**

Bar spacing approx. 30-60 mm



**QL110i**

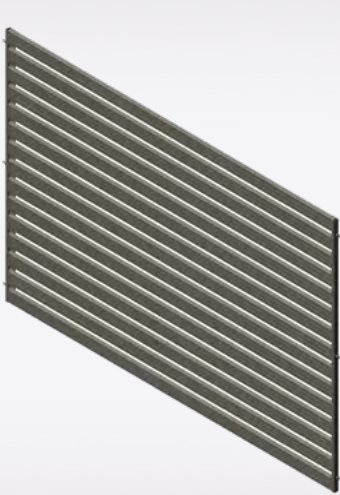
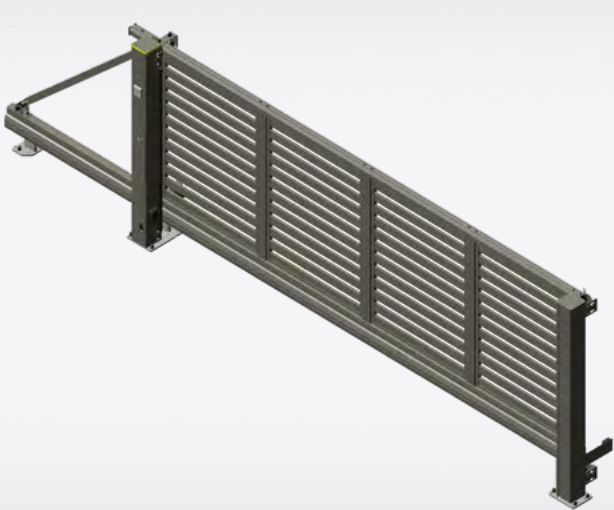
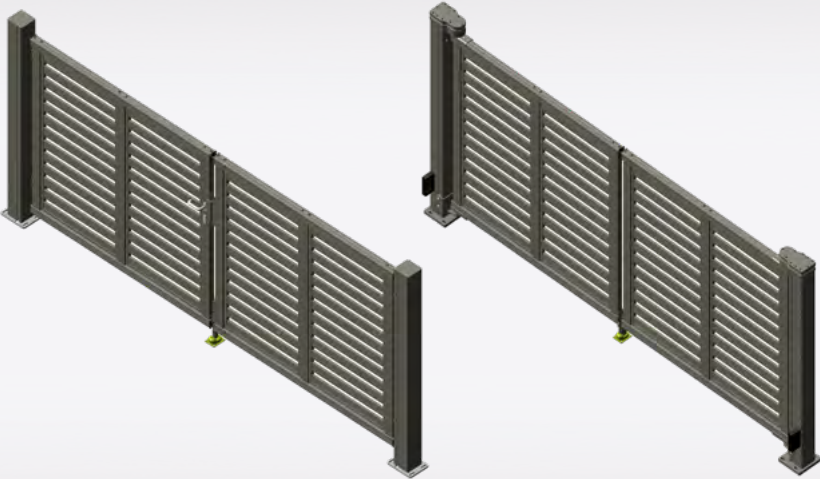
Bar spacing approx. 30-80 mm



## Characteristics

- Made of aluminium
- Various slat widths: 32, 65 and 110 mm
- Built into the frame
- Weather-resistant and low-maintenance
- A beautiful privacy screen in all variations

## Comprehensive solution



### Pedestrian gate

- Width: up to 1,500 mm
- Height: up to 2,000 mm (with 100 mm ground clearance)
- Built-in lock with 3 keys and elegant handleset
- Optionally with electric gate opener

### Manual and power-operated swing gate

- Single-leaf gates up to 3,000 mm wide and 2,000 mm high (with 100 mm ground clearance)
- Double-leaf gates up to 5,000 mm wide and 2,000 mm high (with 100 mm ground clearance)
- Inwards and outwards opening direction possible
- Invisible drive unit in the drive post

### Manual and power-operated sliding gate

- Width: up to 6,000 mm
- Height: up to 2,000 mm (with 100 mm ground clearance)
- Floor-guided or cantilever version
- Electric Plug & Play version

### Fence

- Width: up to 2,000
  - Height: up to 2,000 mm (with 100 mm ground clearance)
- Due to the method of construction, there are different horizontal profiles between gates and fence



# Model Milan

*Plain sheet metal outside the frame*

The Milan model features a plain sheet metal infill positioned outside the frame, offering maximum opacity for enhanced privacy. This design ensures complete protection from prying eyes while maintaining a sleek, modern aesthetic. The Milan model combines functionality with understated elegance, making it an ideal fit for contemporary architectural concepts. It provides a clean, uninterrupted façade, perfect for those who prioritize both privacy and style.

## Design outside the frame



B1-v



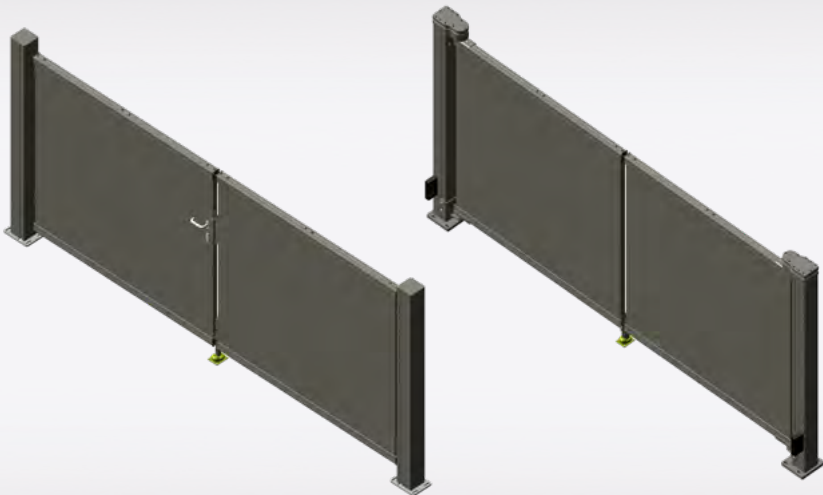
Inner side

## Comprehensive solution



### Pedestrian gate

- Width: up to 1,500 mm
- Height: up to 2,000 mm (with 100 mm ground clearance)
- Built-in lock with 3 keys and elegant handleset
- Optionally with electric gate opener



### Manual and power-operated swing gate

- Single-leaf gates up to 3,000 mm wide and 2,000 mm high (with 100 mm ground clearance)
- Double-leaf gates up to 5,000 mm wide and 2,000 mm high (with 100 mm ground clearance)
- Inwards and outwards opening direction possible
- Invisible drive unit in the drive post



### Manual and power-operated sliding gate

- Width: up to 6,000 mm
- Height: up to 2,000 mm (with 100 mm ground clearance)
- Floor-guided or cantilever version
- Electric Plug & Play version



### Fence

- Width: up to 2,000
- Height: up to 2,000 mm (with 100 mm ground clearance)

## Characteristics

- Made of aluminium
- Full sheets mounted on the frame
- Ideal as a privacy screen
- Weather-resistant and low-maintenance
- A modern, linear eye-catcher
- Architectural solution



# Model Milan

*Plain sheet metal within the frame*

The Milan model features a plain sheet metal infill within the frame, creating a uniform and contemporary appearance. This design offers an elegant and functional solution, ensuring maximum privacy and protection from prying eyes. Seamlessly blending with contemporary architectural concepts, it emphasizes clean lines and minimalism. Combining aesthetic sophistication with practical functionality, the Milan model is the ideal choice for a stylish and screened exterior.

## Design within the frame



B1-i



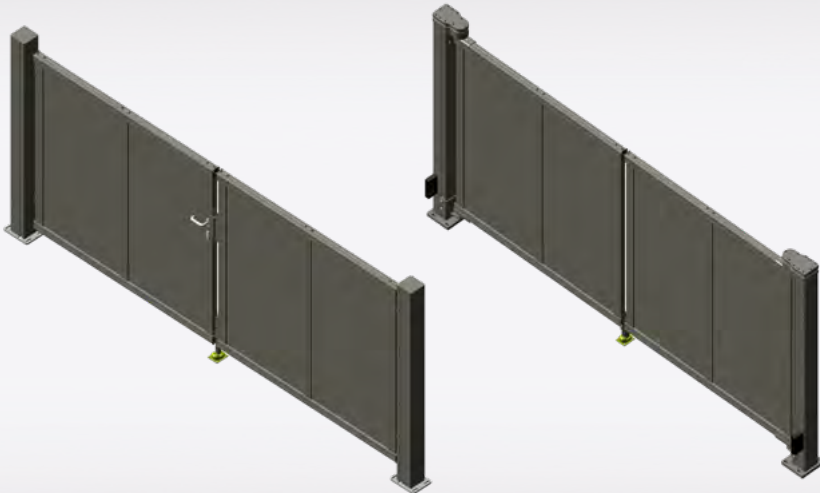
Inner side

## Comprehensive solution



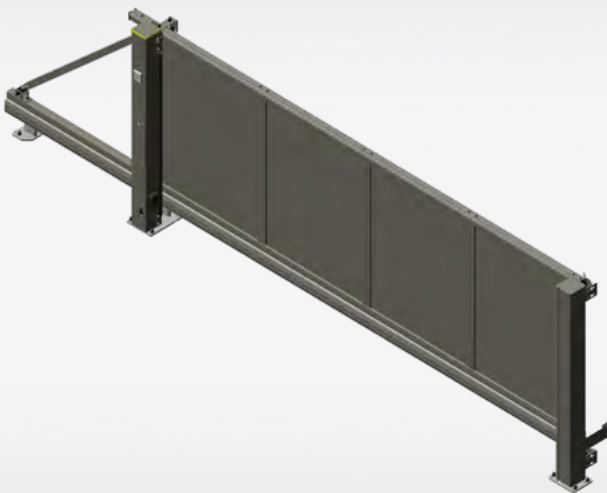
### Pedestrian gate

- Width: up to 1,500 mm
- Height: up to 2,000 mm (with 100 mm ground clearance)
- Built-in lock with 3 keys and elegant handleset
- Optionally with electric gate opener



### Manual and power-operated swing gate

- Single-leaf gates up to 3,000 mm wide and 2,000 mm high (with 100 mm ground clearance)
- Double-leaf gates up to 5,000 mm wide and 2,000 mm high (with 100 mm ground clearance)
- Inwards and outwards opening direction possible
- Invisible drive unit in the drive post



### Manual and power-operated sliding gate

- Width: up to 6,000 mm
- Height: up to 2,000 mm (with 100 mm ground clearance)
- Floor-guided or cantilever version
- Electric Plug & Play version



### Fence

- Width: up to 2,000
- Height: up to 2,000 mm (with 100 mm ground clearance)

## Characteristics

- Made of aluminium
- Full sheets within the frame
- Ideal as a privacy screen
- Weather-resistant and low-maintenance
- Classic contemporary design
- Architectural solution





# Model Prague

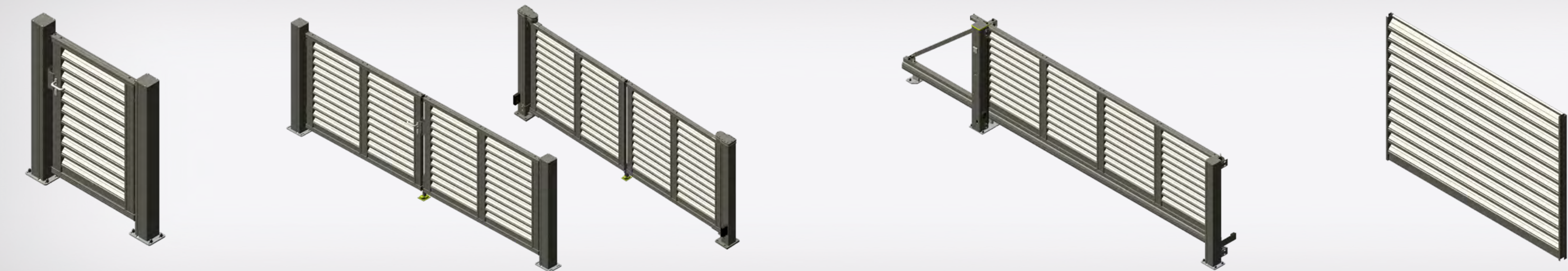
*Overlapping aluminium slats*

The Prague model features horizontally arranged aluminum slats, positioned diagonally on top of each other. This opaque finish guarantees maximum privacy while offering a sleek, modern design. The slat arrangement creates a dynamic façade that seamlessly integrates with contemporary architecture. Combining elegance with functionality, the Prague model is the ideal choice for a stylish and secure property boundary.

## Design



## Comprehensive solution



### Pedestrian gate

- Width: up to 1,500 mm
- Height: up to 2,000 mm (with 100 mm ground clearance)
- Built-in lock with 3 keys and elegant handleset
- Optionally with electric gate opener

### Manual and power-operated swing gate

- Single-leaf gates up to 3,000 mm wide and 2,000 mm high (with 100 mm ground clearance)
- Double-leaf gates up to 5,000 mm wide and 2,000 mm high (with 100 mm ground clearance)
- Inwards and outwards opening direction possible
- Invisible drive unit in the drive post

### Manual and power-operated sliding gate

- Width: up to 6,000 mm
- Height: up to 2,000 mm (with 100 mm ground clearance)
- Floor-guided or cantilever version
- Electric Plug & Play version

### Fence

- Width: up to 2,000
  - Height: up to 2,000 mm (with 100 mm ground clearance)
- Due to the method of construction, there are different horizontal profiles between gates and fence

## Characteristics

- Made of Aluminium
- Horizontal, slanted lamella profiles
- Inside the frame
- Weather-resistant and low-maintenance
- Privacy screen for more intimacy
- Architectural solution





# Model Vienna

Extravagant modern design

The Vienna model features durable, vertical bars 50 x 50 mm, spaced approximately 50 mm apart. This design provides a modern, solid aesthetic that complements various architectural styles. Combining strength with visual appeal, the Vienna model is perfect for fencing properties in both a stylish and secure manner.

## Design



ST50 fine

Bar spacing approx.50 mm  
with connecting bar



## Characteristics

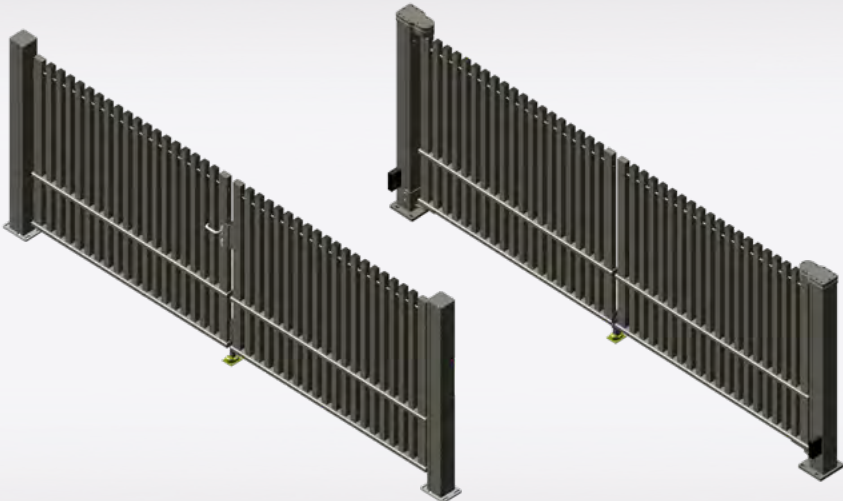
- Made of aluminium
- Vertical aluminium profiles 50 × 50 mm
- With cover cap
- Weather-resistant and low-maintenance
- Classic contemporary design
- Architectural solution

## Comprehensive solution



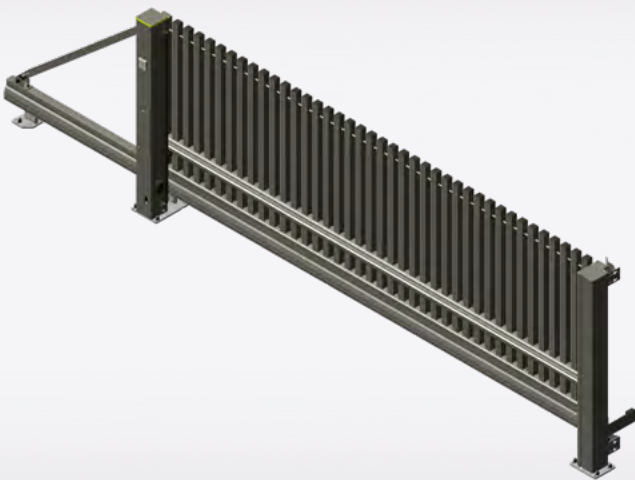
### Pedestrian gate

- Width: up to 1,500 mm
- Height: up to 2,000 mm (with 100 mm ground clearance)
- Built-in lock with 3 keys and elegant handleset
- Optionally with electric gate opener



### Manual and power-operated swing gate

- Single-leaf gates up to 3,000 mm wide and 2,000 mm high (with 100 mm ground clearance)
- Double-leaf gates up to 5,000 mm wide and 2,000 mm high (with 100 mm ground clearance)
- Inwards and outwards opening direction possible
- Invisible drive unit in the drive post



### Manual and power-operated sliding gate

- Width: up to 6,000 mm
- Height: up to 2,000 mm (with 100 mm ground clearance)
- Floor-guided or cantilever version
- Electric Plug & Play version



### Fence

- Width: up to 2,000
- Height: up to 2,000 mm (with 100 mm ground clearance)
- No post needed



# Model Vienna

*Stylish and creative design*

Our Vienna model features vertical bars measuring 50 x 50 mm with a spacing of approximately 100 mm. This design gives the fence a modern appearance that blends harmoniously with various architectural styles. It combines attractive design with functionality and is ideal for stylishly enclosing properties.

## Design



ST50

Bar spacing approx. 100 mm  
with connecting bar



## Characteristics

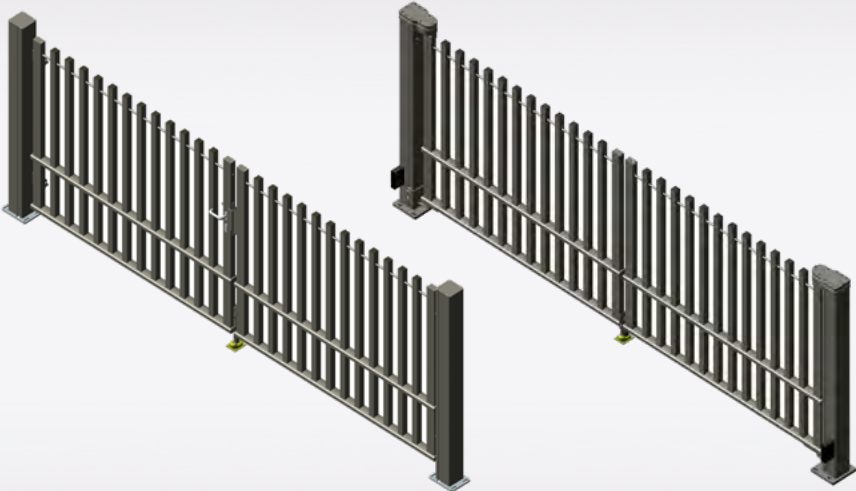
- Made of aluminium
- Vertical aluminium profiles 50 × 50 mm
- With cover cap
- Weather-resistant and low-maintenance
- A linear, minimalist design
- Architectural solution

## Comprehensive solution



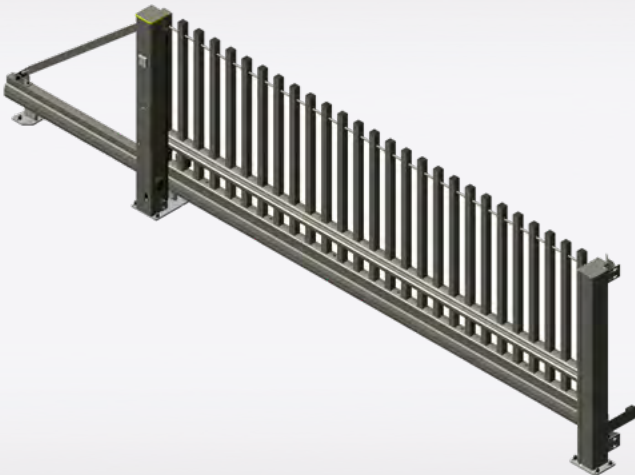
### Pedestrian gate

- Width: up to 1,500 mm
- Height: up to 2,000 mm (with 100 mm ground clearance)
- Built-in lock with 3 keys and elegant handleset
- Optionally with electric gate opener



### Manual and power-operated swing gate

- Single-leaf gates up to 3,000 mm wide and 2,000 mm high (with 100 mm ground clearance)
- Double-leaf gates up to 5,000 mm wide and 2,000 mm high (with 100 mm ground clearance)
- Inwards and outwards opening direction possible
- Invisible drive unit in the drive post



### Manual and power-operated sliding gate

- Width: up to 6,000 mm
- Height: up to 2,000 mm (with 100 mm ground clearance)
- Floor-guided or cantilever version
- Electric Plug & Play version



### Fence

- Width: up to 2,000
- Height: up to 2,000 mm (with 100 mm ground clearance)
- No post needed



# Model Rome

*Eternal design in plain sheet metal*

The Rome model combines modern design with cutting-edge technology. Thanks to the precise laser cutting process, the sheet metal design achieves a unique blend of elegance and functionality. The intricate laser-cut patterns give sliding gates, fences, and swing gates a distinctive appearance, seamlessly integrating with contemporary architectural concepts. The laser-cut panels are expertly installed within the frames, enhancing both form and function.

## Design within the frame



LC Horizontal



LC Nature



## Characteristics

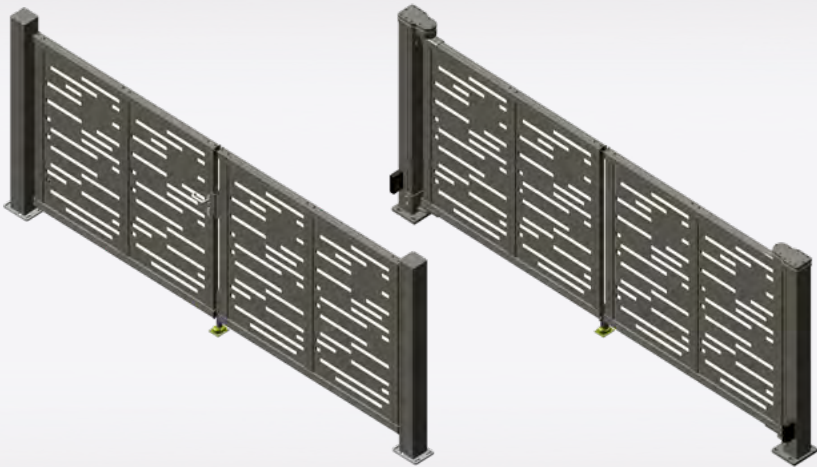
- Made of aluminium
- Decorative laser-cut sheets
- Creative design
- Aluminium sheet - 2 mm thick
- Architectural solution

## Comprehensive solution



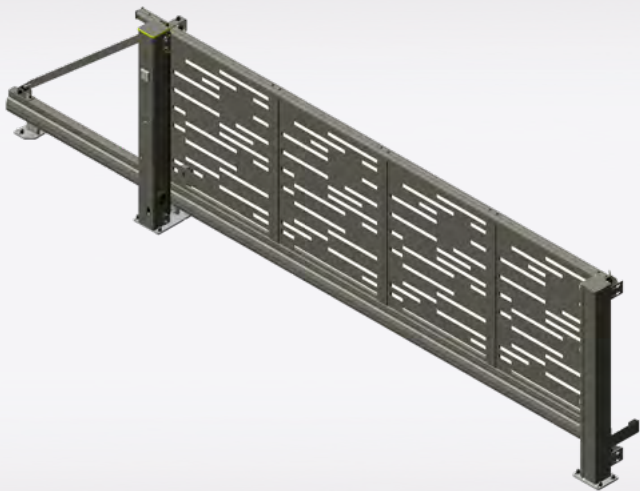
Pedestrian gate

- Width: up to 1,500 mm
- Height: up to 2,000 mm (with 100 mm ground clearance)
- Built-in lock with 3 keys and elegant handleset
- Optionally with electric gate opener



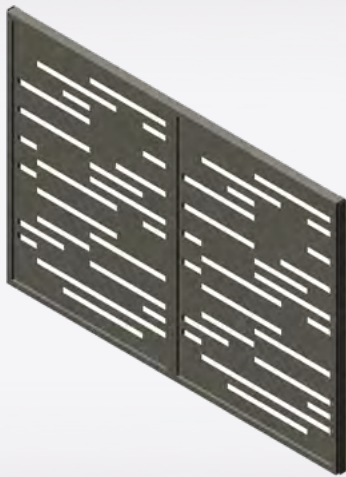
Manual and power-operated swing gate

- Single-leaf gates up to 3,000 mm wide and 2,000 mm high (with 100 mm ground clearance)
- Double-leaf gates up to 5,000 mm wide and 2,000 mm high (with 100 mm ground clearance)
- Inwards and outwards opening direction possible
- Invisible drive unit in the drive post



Manual and power-operated sliding gate

- Width: up to 6,000 mm
- Height: up to 2,000 mm (with 100 mm ground clearance)
- Floor-guided or cantilever version
- Electric Plug & Play version



Fence

- As standard panels up to 2,000 mm high and wide
- Design of the gates customised in individual production



# Model Dresden

Industrial-style design

Our model Dresden has a robust yet elegant design that has been specially developed for demanding outdoor areas. The double welded mesh construction ensures maximum stability and security without compromising on aesthetics. The combination of sliding gates, fences and swing gates provides a complete solution that blends perfectly with modern architecture.

## Design within the frame



DSM-I light

Double welded mesh mats with a dimension of 6/5/6 in the frame

## Comprehensive solution



### Pedestrian gate

- Width: up to 1,500 mm
- Height: up to 2,000 mm (with 100 mm ground clearance)
- Built-in lock with 3 keys and elegant handleset
- Optionally with electric gate opener



### Manual and power-operated swing gate

- Single-leaf gates up to 3,000 mm wide and 2,000 mm high (with 100 mm ground clearance)
- Double-leaf gates up to 5,000 mm wide and 2,000 mm high (with 100 mm ground clearance)
- Inwards and outwards opening direction possible
- Invisible drive unit in the drive post



### Manual and power-operated sliding gate

- Width: up to 6,000 mm
- Height: up to 2,000 mm (with 100 mm ground clearance)
- Floor-guided or cantilever version
- Electric Plug & Play version



## Characteristics

- Frame made of aluminium filled with metal double welded mesh mats with a dimension of 6/5/6 - mesh 50 x 200 mm
- Optionally, it can also be made opaque using visual cover strips
- Industrial Look
- Architectural solution



# Letter and parcel column

*A stylish solution for your mail and parcels!*



## Type BS letterbox column

The free-standing letterbox column made of coated aluminium offers a stylish and durable solution for your mail. Combining modern design with practical functionality, the letterbox column provides tailored solutions to suit individual needs. Perfect for anyone who values security and aesthetics.

### Key features at a glance:

- Material: High-quality, coated aluminium for weather resistance
- Secure: Internal access door with lock, comes with 2 keys (approx. 290 × 290 mm)
- Practical mail slot: Stainless steel letter slot (260 × 40 mm), suitable for items up to A4 size
- Adjustable height: Can be customised up to 2000 mm
- Customisable: Cut-outs for intercom systems available on request
- Sturdy base plate: Galvanised steel, dimensions 420 × 400 mm (recommended foundation size at least 500 × 500 mm)

## Type BPS letter and parcel box column

The free-standing Essential letter and parcel box column, made of high-quality coated aluminium, offers an elegant and practical solution for receiving mail and parcels. Perfect for anyone looking for a durable, secure, and stylish solution for their deliveries.

### Key features at a glance:

- For mail and parcels: suitable items up to A4 size and parcels up to DHL M size (300 mm × 375 mm × 135 mm)
- Secure: Internal access door with lock, comes with 2 keys (approx. 290 × 290 mm)
- Practical mail slot: Stainless steel letter slot (260 × 40 mm), suitable for items up to A4 size
- Adjustable height: Can be customised up to 2000 mm
- Customisable: Cut-outs for intercom systems available on request
- Sturdy base plate: Galvanised steel, dimensions 420 × 400 mm (recommended foundation size at least 500 × 500 mm)

*Note: The letter and parcel pillars are not weatherproof or condensation-proof. Suitable for use as catch post for sliding gates or as a slam post for pedestrian gates. Not suitable for use as a guide post.*



# Powder Coat Finish

Our products are finished with a high-quality powder coating, applied in our own factory. With excellent weather resistance, easy maintenance, and scratch-resistant surfaces, they ensure lasting beauty and quality for many years.

- 7 beautiful standard colours are available
- Easy-care
- Scratch-proof
- Weather-resistant
- Low-maintenance
- Beauty for many years



Special RAL colours are also available on request

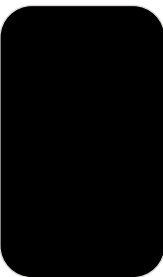
## Colouring



RAL 6005  
Moss green



RAL 7016  
Anthracite grey



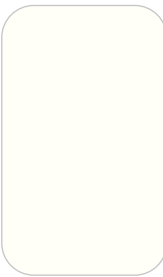
RAL 9005  
Jet black



RAL 9006  
White aluminium



RAL 9007  
Grey aluminium



RAL 9010  
Pure white



RAL 7030  
Stone grey

# Accessories

A wide range of electrical and mechanical accessories is available for you!

## Electrical accessories (Example)



Remote control



Key switch



Induction loop



Holler Gate Control



Annual and weekly  
timer

## Mechanical accessories (Example)



Spike strip



Fence connection



Gate catcher



Post substructures in  
different heights



Keydrop





## Sliding Gate

### Manually operated

- ▶ Track profile HST25A, 106 × 158 mm
- ▶ Frame construction: vertical profiles 80 × 50 mm
- ▶ Connected rolling mechanism
- ▶ Ball-bearing rollers, double roller guide in the top profile
- ▶ Guide and catch posts HST5 (150 × 150 mm) incl. dowel plates
- ▶ Powder coated
- ▶ Hook lock with 3 keys

### Power-operated

- ▶ Plug & Play pre-assembled
- ▶ Track profile HST25A, 106 × 158 mm
- ▶ Frame construction: vertical profiles 80 × 50 mm
- ▶ Connected rolling mechanism
- ▶ Ball-bearing rollers, double roller guide in the top profile
- ▶ Guide and catch posts HST5 (150 × 150 mm) incl. dowel plates
- ▶ Powder coated
- ▶ Drive motor 24 V and control unit in the post
- ▶ Plastic rack strips (centrally integrated in the profile)
- ▶ Security package consisting of 1 yellow flashing light, 2 safety photoelectric sensors, key switch, inactive safety contact edges on all secondary closing edges
- ▶ Emergency unlocking function to open the gate in the case of a power outage

### Running gear

The sliding gate almost seems to ‘float’ silently on the low-maintenance track rollers. Eight ball-bearing support rollers and four ball-bearing cross rollers ensure smooth running and perfect weight distribution. The entire running gear is mounted on hot-dip galvanised dowel plates.

### Profile technology

The static frame is made of high-strength extruded aluminium. Our profiles have been developed especially for these applications, they are positively locking and highly durable.



### Upper guiding/ guide roller bracket

The low-maintenance ball bearings guarantee a trouble-free operation even in unfavourable weather conditions.



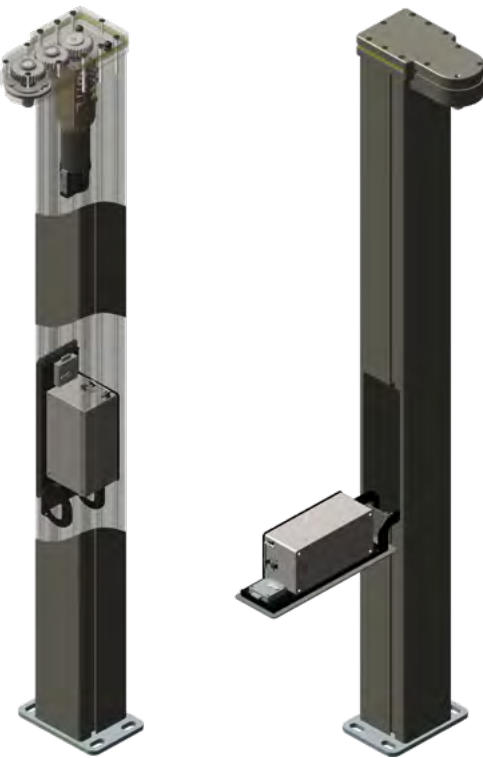
## Swing Gate

### Manually operated

- ▶ Frame construction: top and bottom profiles 66 × 62 mm and vertical profiles 80 × 50 mm
- ▶ 2× posts 150 × 150 mm
- ▶ Flush mount lock (1-leaf) or centre drop bolt (2-leaf) with 3 keys
- ▶ 1× or 2× hinge breakage protections
- ▶ Elegant stainless steel lever set

### Power-operated

- ▶ Frame construction: top and bottom profiles 66 × 62 mm and vertical profiles 80 × 50 mm
- ▶ 2× system posts, profile 150 × 150 mm
- ▶ 1 or 2 drive units integrated in the post (H30K)
- ▶ Security package consisting of a yellow flashing light
- ▶ Emergency unlocking function to open the gate in the case of a power outage



### Motor drive for swing gate H30K

- ▶ Invisible integration in the drive post
- ▶ The gate leaf can be replaced independently of the drive unit
- ▶ Drive unit protected from dirt and weather influences in post (150 × 150 mm)
- ▶ Gear mechanism
- ▶ Post clearance width up to 3 m (for single-leaf swing gates) or 5 m (for double-leaf swing gates)
- ▶ Easy maintenance: technicians can easily access the drive unit without dismantling the gate
- ▶ Engine operating noise is extremely low



# HOLLER ||||| HOME ESSENTIAL



Your local partner

Holler Tore GmbH

Schlossallee 4  
8435 WAGNA  
AUSTRIA

Tel.: +43 3452 86031

[mail@holler-tore.at](mailto:mail@holler-tore.at)  
[www.holler-tore.at](http://www.holler-tore.at)

